



BRONX INDUSTRIAL SPACE FOR LEASE

1385 SEABURY AVENUE SPACE D • BRONX, NY 10461



Details:

- Size:** 4,000 SF Warehouse
- Rent:** \$8,800/month
- Zoning:** M1 (Industrial)
- Notes:** 16 ft. ceiling, small office, clean floor, gas heat, secure windows, 1 overhead door, LED lighting

Features:

- Located in Zerega Industrial Business Zone
- M1 Zoning
- Gas heat
- Easy access to Bruckner Expressway (I-278), Cross Bronx Expressway (I-95), and Hutch
- New windows
- 5 Min Walk To Subway **6**

Contact Exclusive Broker

Elias Everett 914.907.3858 elias@southbronxcommercial.com

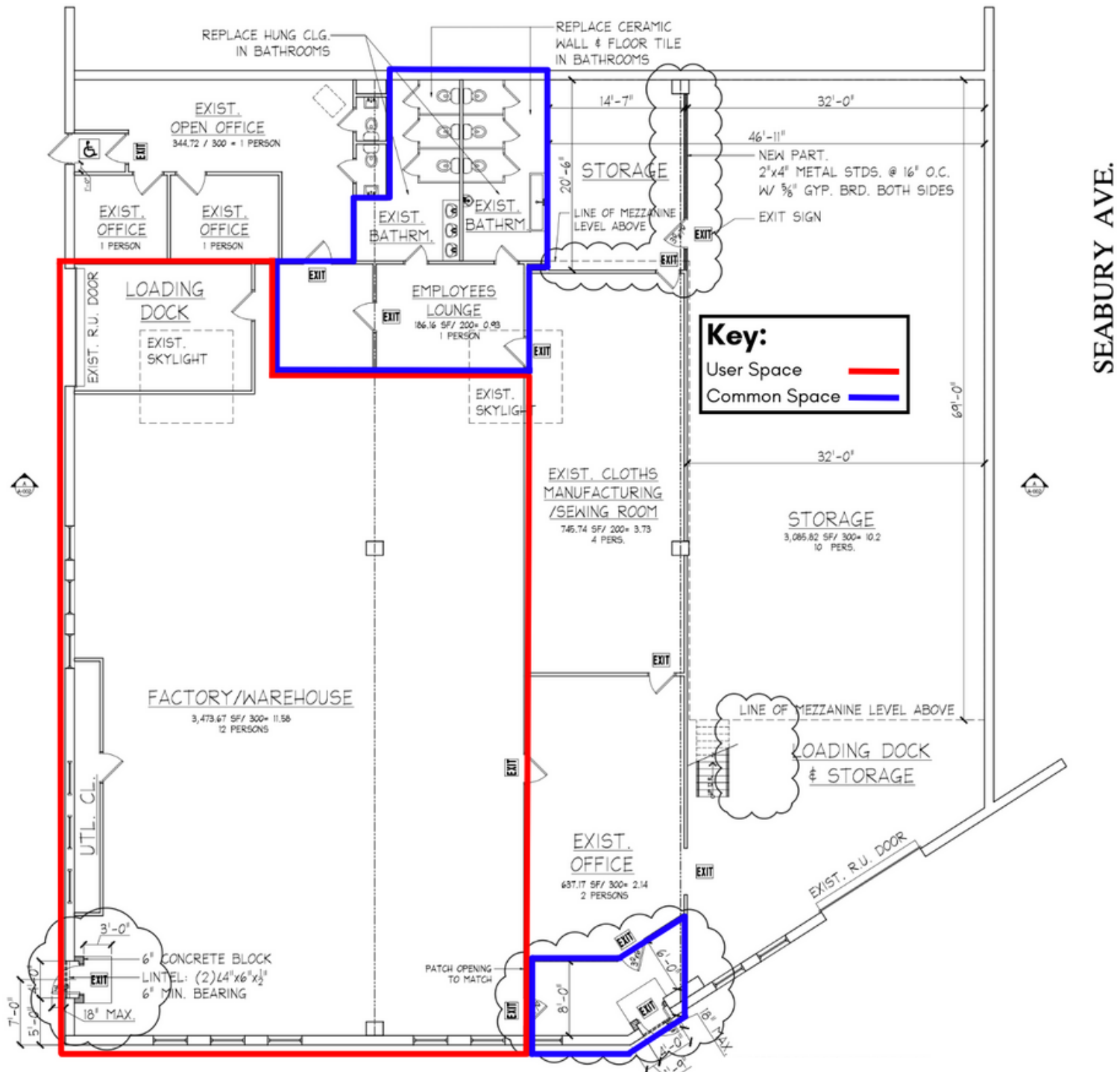
www.southbronxcommercial.com



BRONX INDUSTRIAL SPACE FOR LEASE

1385 SEABURY AVENUE SPACE D • BRONX, NY 10461

Floor Plan



1 FIRST FLOOR PLAN
Scale: 3/16"=1'-0"

SEABURY AVE.

Contact Exclusive Broker

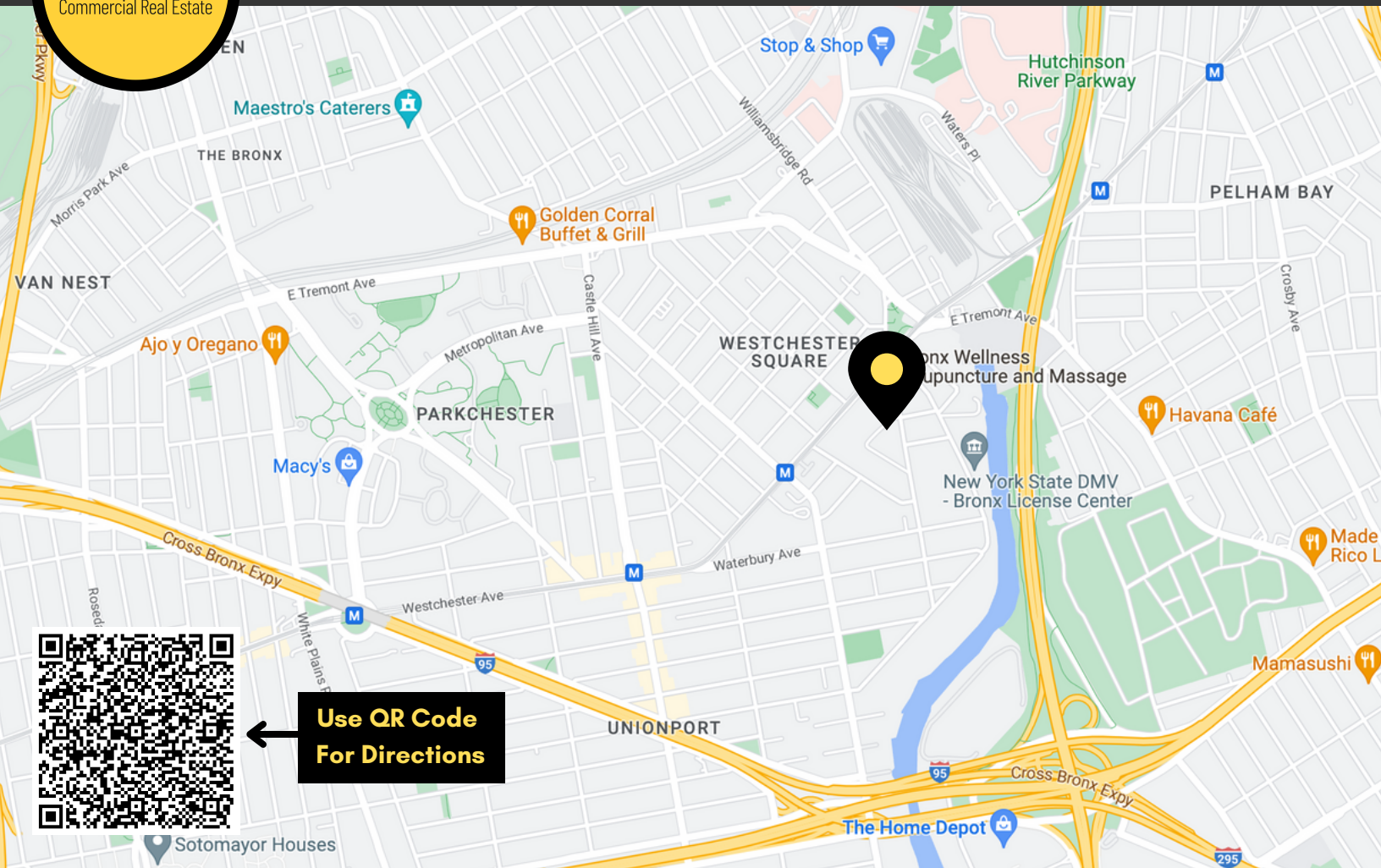
Elias Everett 914.907.3858 elias@southbronxcommercial.com

www.southbronxcommercial.com



BRONX INDUSTRIAL SPACE FOR LEASE

1385 SEABURY AVENUE SPACE D • BRONX, NY 10461



Use QR Code For Directions

Offering Details

- Rental Rate: \$8,800/month
- Available Space:
 - 4,000 SF Warehouse
 - Common space
- Notes: Overhead door, 16 ft. ceiling height, 1 overhead door, LED lighting

Property Overview

- Close by:
 - DMV (Commerce Ave)
 - Key Food
 - White Castle
 - Walgreens

Location Details

- Located in the Zerega Industrial Business Zone
- 3 minute walk to subway
- Easy access to I-95, I- 278, I-295, and Hutch
- Very close to Westchester Square

Commentary: Well located warehouse space very close to public transportation. Perfect for any industrial user or contractor. Easy access to major highways, Whitestone Bridge, and Throggs Neck Bridge.

Contact Exclusive Broker

Elias Everett 914.907.3858 elias@southbronxcommercial.com

www.southbronxcommercial.com