



# FIRST FLOOR COMMERCIAL SPACE FOR LEASE

## 766 LAFAYETTE AVENUE • BROOKLYN, NY 11221



### Details:


**Size:** 1,952 SF

**Type:** Commercial

**Rent:** \$6,000/month

**Notes:** Commercial space,  
Six private offices, Conference  
room, Multiple entrances, Two  
bathrooms, Kitchenette

### Features:

- First floor space
- Building constructed in 2015
- Multiple bathrooms
- Can be used as office or retail
- Short walk to subway 
- Perfect for management or sales office

### Contact Agent

**Elias Briff - 917.856.5214 - [eliasbriff@southbronxcommercial.com](mailto:eliasbriff@southbronxcommercial.com)**

[www.southbronxcommercial.com](http://www.southbronxcommercial.com)





**FIRST FLOOR COMMERCIAL SPACE FOR LEASE**  
**766 LAFAYETTE AVENUE • BROOKLYN, NY 11221**

## **ADDITIONAL PHOTOS**



**Contact Agent**

**Elias Briff - 917.856.5214 - [eliasbriff@southbronxcommercial.com](mailto:eliasbriff@southbronxcommercial.com)**

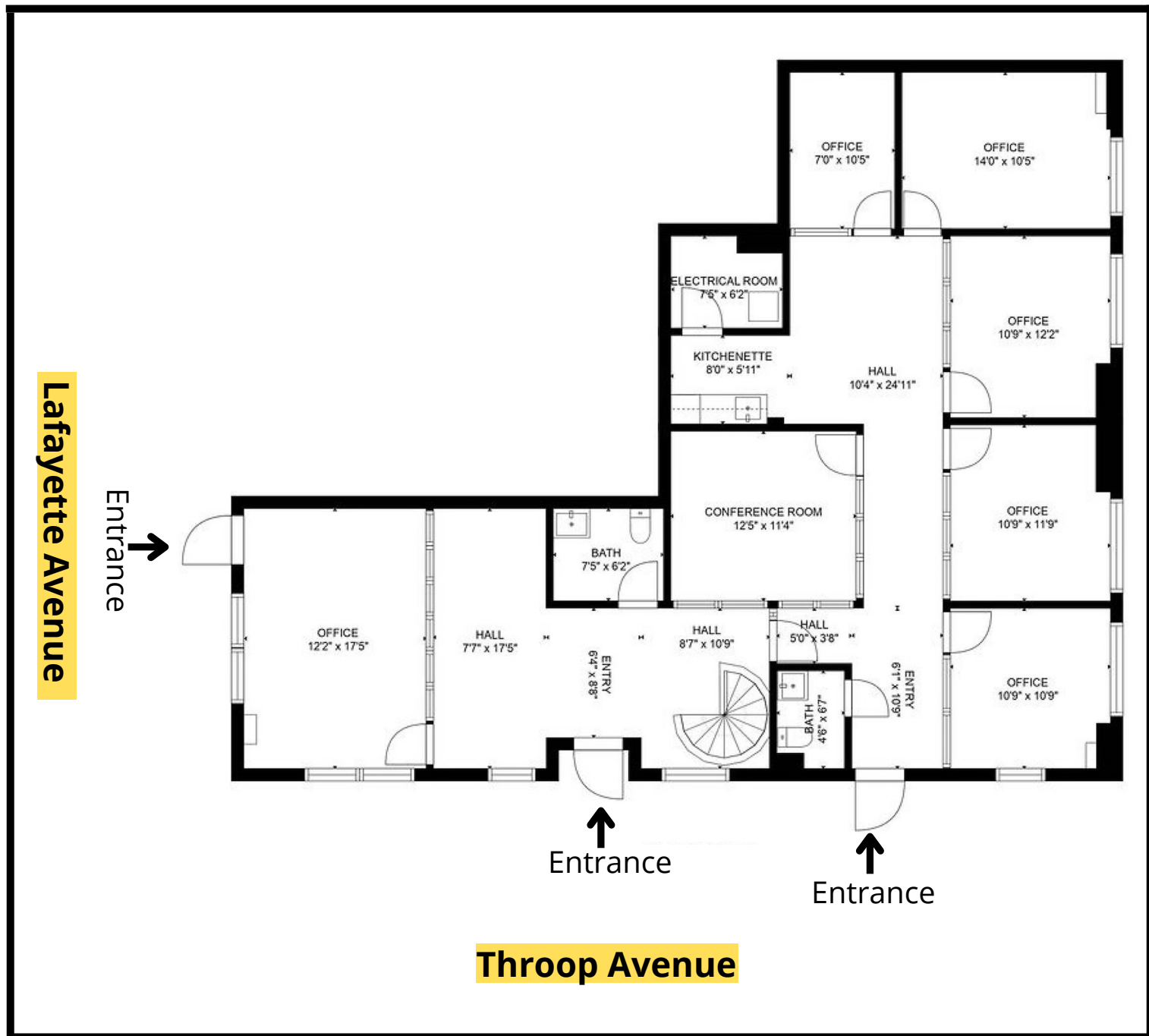
**[www.southbronxcommercial.com](http://www.southbronxcommercial.com)**



# FIRST FLOOR COMMERCIAL SPACE FOR LEASE

## 766 LAFAYETTE AVENUE • BROOKLYN, NY 11221

# FLOOR PLAN



### Contact Agent

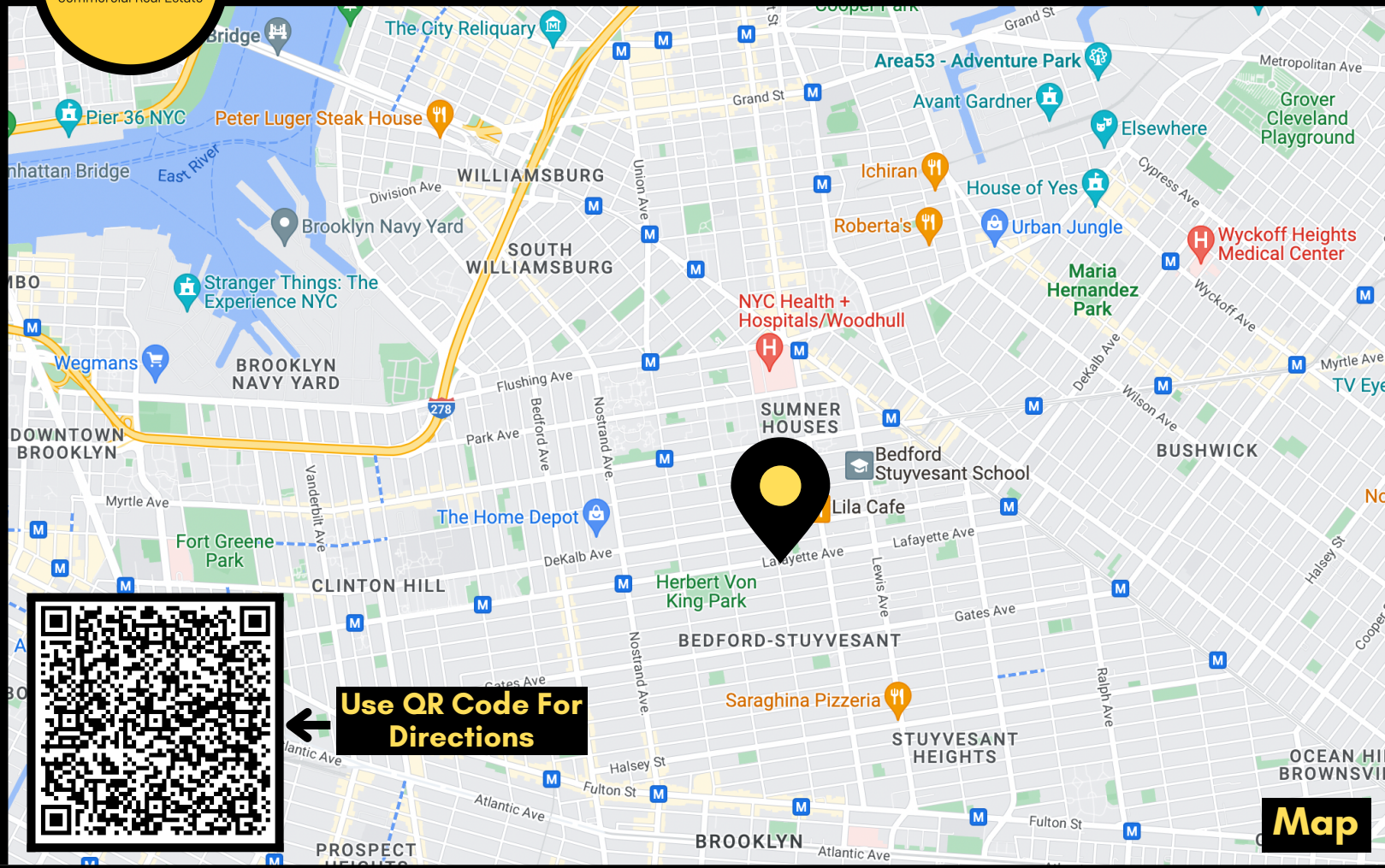
Elias Briff - 917.856.5214 - [eliasbriff@southbronxcommercial.com](mailto:eliasbriff@southbronxcommercial.com)

[www.southbronxcommercial.com](http://www.southbronxcommercial.com)



# FIRST FLOOR COMMERCIAL SPACE FOR LEASE

## 766 LAFAYETTE AVENUE • BROOKLYN, NY 11221



### Offering Details

- Rental Rate: \$6,000/Month
- Available Space: 1,952 SF
- Zoning: R6B/C2
- Previous Use: Real Estate Management Office

### Property Overview

- Close by:
  - Herbert Von King Park
  - Bravo Supermarket
  - Multiple Coffee Shops and Bars
- Other Tenants:
  - Apartments Upstairs

### Location Details

- Close To Myrtle-Willoughby Subway Station
- Easy Access To I-278
- One Block From Bus Stop

### **Commentary:**

Very nice building on Lafayette Avenue. Located in Bushwick on border of Crown Heights. Very close to Broadway and developing Downtown Brooklyn area. Ideal for a sales office, professional firm, or management company.

### Contact Agent

**Elias Briff - 917.856.5214 - [eliasbriff@southbronxcommercial.com](mailto:eliasbriff@southbronxcommercial.com)**

[www.southbronxcommercial.com](http://www.southbronxcommercial.com)